



Genrock Group of Companies

P.O. Box 170
Carletonville
2515

Tel: (018) 786 1481
(018) 786 1482
Fax: (018) 786 1499

Genrock Mining

Pre-Stressing Units. Pump Equipment. Mining products.

VENTALATION CURTAINS

FOR THE

MINING & CONSTRUCTION INDUSTRIES

***Vent Mattresses** are manufactured to the highest quality standards for Polypropylene coated material to withstand the arduous working conditions found in the mining and construction industries.*

Vent Mattresses are spaced with mine twine and washers to support the material and help construct the wall effect. This product is made in-house for the last 15 years.

Vent Mattresses Standard Range:

- (a) 0.75m x 5m Bags
- (b) 1.00m x 5m Bags
- (c) 1.30m x 5m Bags
- (d) 1.50m x 5m Bags

Special sizes can be made to fit

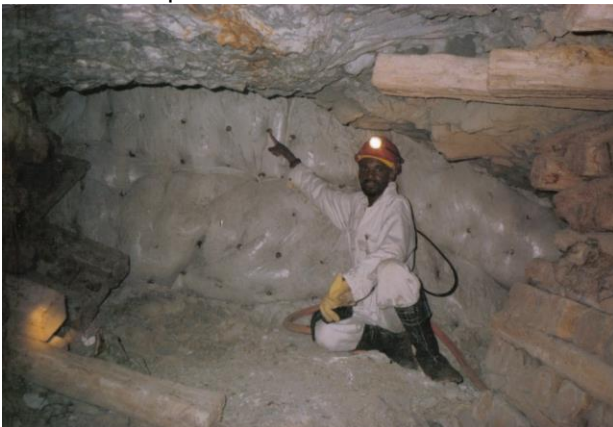
***Vent Curtains** are manufactured to the highest quality standards with Polypropylene 114gsm with coated 1cm red strip Material. This material is Flame Retardant according to the NCB245 Specifications for the mines.*

Vent Curtains can be supplied in rolls or 10 m sheets.

Vent Curtains Standard size range

- (e) 1.37m x 10m
- (f) 1.50m x 10m
- (g) 1.80m x 10m
- (h) 2.00m x 10m
- (i) 2.45m x 10m

All this sizes can be supplied in 500m rolls



MANAGING DIRECTOR: J.N. VAN DER MERWE



Genrock Group of Companies

P.O. Box 170
Carletonville
2515

Tel: (018) 786 1481
(018) 786 1482
Fax: (018) 786 1499

Genrock Mining

Pre-Stressing Units. Pump Equipment. Mining products.

Fabric specifications

Quality : M06373__***

Type : Flame Resistant .

Nominal Widths : 137/150/180/200

Weave ground : PLAIN

Material : Polypropylene , Flame Retardant
acc. NCB 245:1988

Colour : Natural .

Fabric weight : nominal fabric : 87 gr/sqm
range : 83-96gr/sqm

Nominal : 117 gr/sqm
Min . 112 gr/sqm

Warp Density : 10.00 Ends per inch (39.4
ends per 10cm)

Weft Density : 8.00 Picks per inch (31.5
picks per 10cm)

Tensile strength : SABS 0221-1988
Warp min : 14.1 kN per meter
(1150 N tests sample)
Weft min. : 11.1 kN per meter
(890 N test sample)

Elongation : SABS0221-1988

Warp : 10-20 %
Weft : 08-20 %



MANAGING DIRECTOR: J.N. VAN DER MERWE